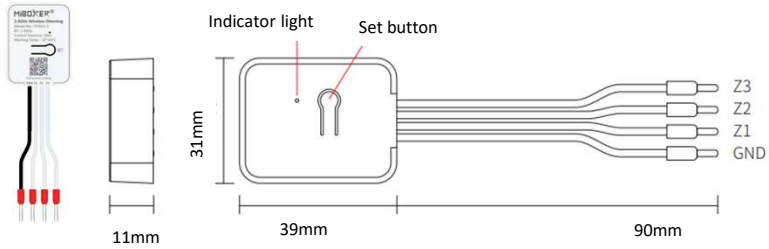


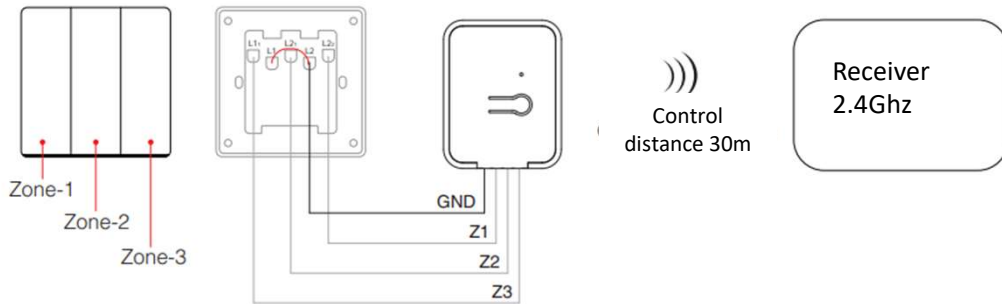
These Push to make switches (also known as a re-active switch) have a device included that allows for wireless connection to the receivers.

SYCAMORE

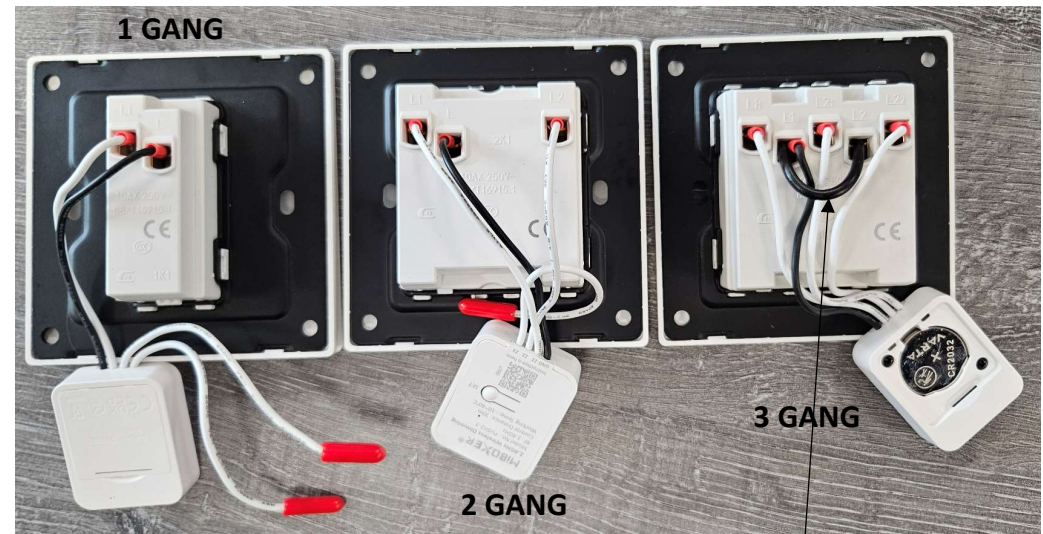
Remote control lighting system.



The unit requires qty 1 x CR2032 (supplied). Insert this into the battery compartment .
 The unit has 4 cables. One Black & three white.
 For 1 gang switch connect the black & the white one marked Z1
 For 2 gang use one black & Z1 & Z2.
 For 3 gang use one black & Z1 & Z2 & Z3.



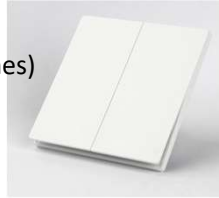
1 gang requires min 30mm deep back box.
 2 & 3 gang requires 40mm deep back box



SY9081/1
 1 Gang (one zone)
 SSP £19.16/ea.



SY9081/2
 2 Gang (two zones)
 SSP £23.77/ea.



SY9081/3
 3 Gang
 (three zones)
 SSP £30.03/ea.

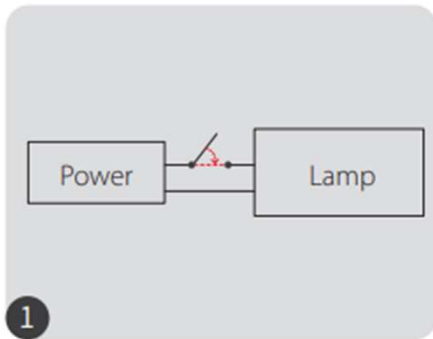


Note: On 3 gang switches the black needs to be linked to L2

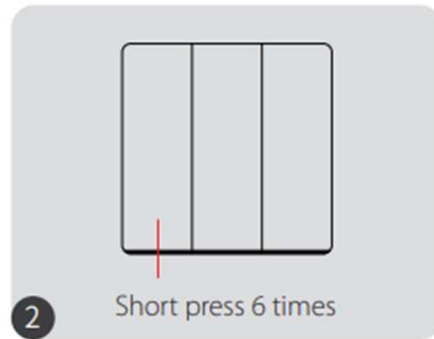
SY9081 – 1, 2, & 3 gang Wireless press to make switches

Wiring connections & linking to receivers

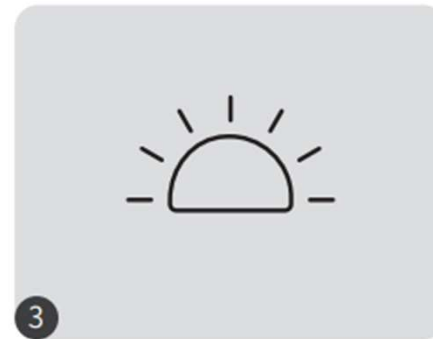
- 1) Make all connections so the lights light up
- 2) Turn the power off & wait 10 seconds.
- 3) Turn on the power & within three seconds make six short presses the switch.
- 4) The lights will flash 3 times to show connection has been successful.
- 5) Continue to link the rest of switches to the receivers.



1
Power off, then power on again after 10 seconds



2
Short press the "PUSH" 6 times within 3 seconds



3
The lamp flashes slowly 3 times, indicating successful linking



If the lamp does not flash slowly, the code binding failed, please re-perform the above steps.
(Note: Already coded lamps cannot be coded again).

SYCAMORE

If you need to clear a connection:-
Power off, then on again after 10 seconds

Three short presses on the "SET" button



Switches can be linked to an unlimited number of lamps/receivers